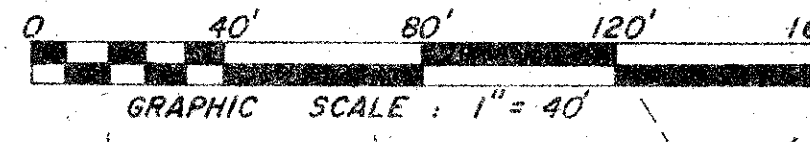


54/39

39

A PORTION OF A P.U.D.
LAKESIDE GREEN-PLAT NO. 6
SECTION 12, TOWNSHIP 43 SOUTH, RANGE 42 EAST
PALM BEACH COUNTY, FLORIDA
IN 2 SHEETS SHEET NO. 2
JANUARY, 1986

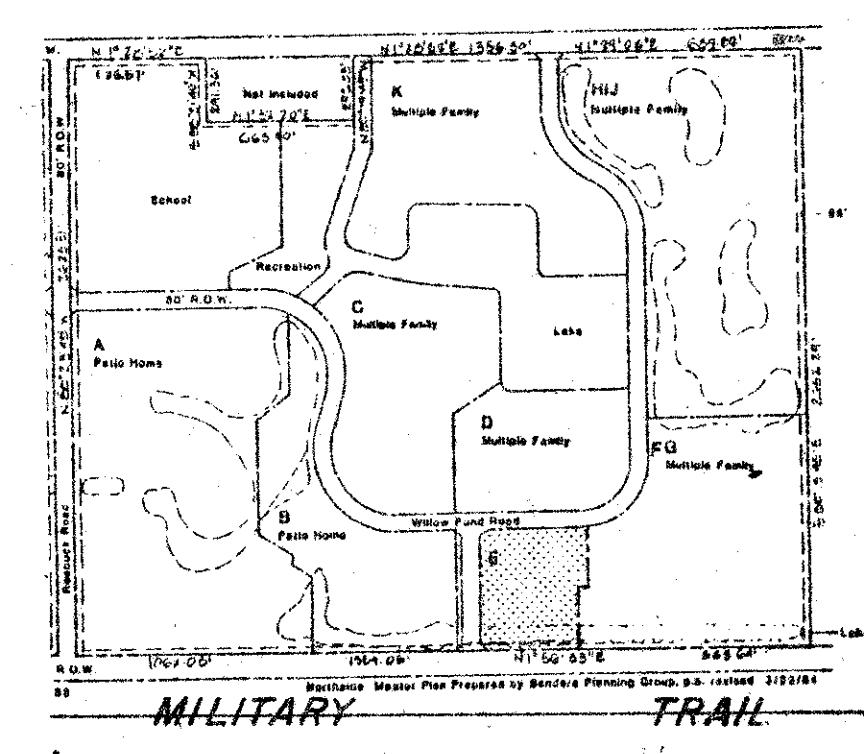
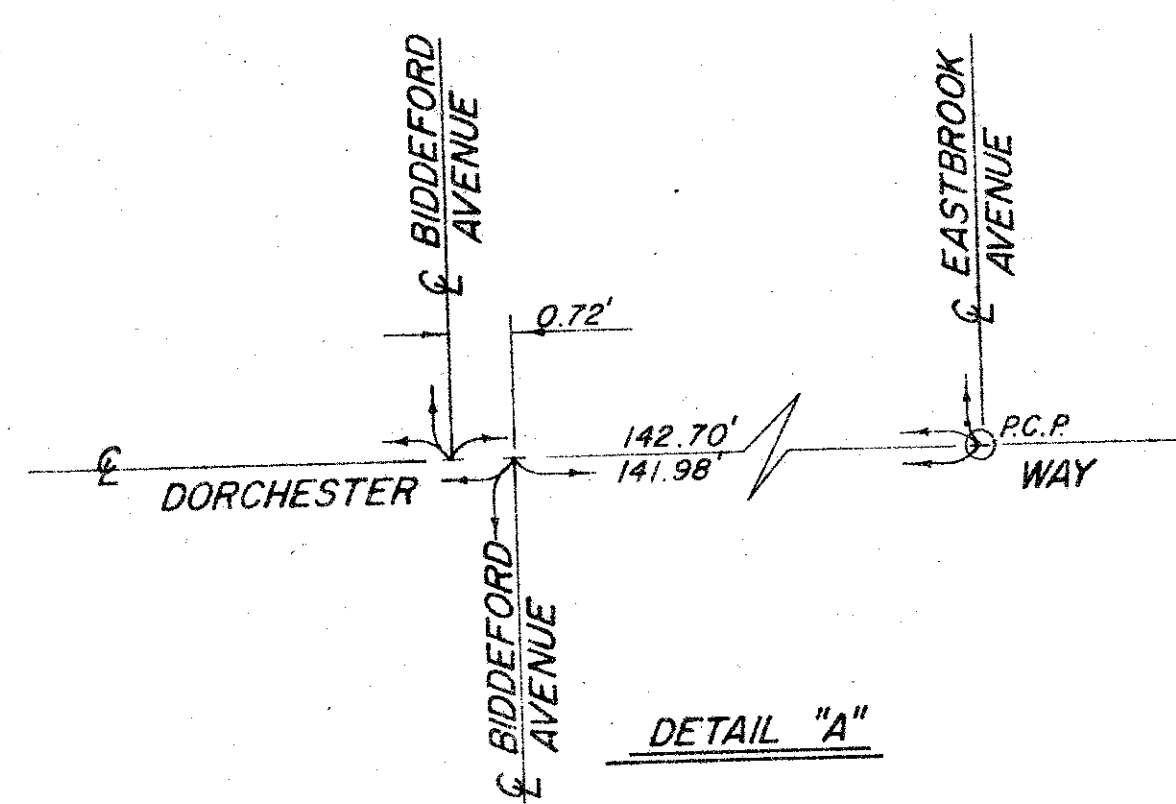
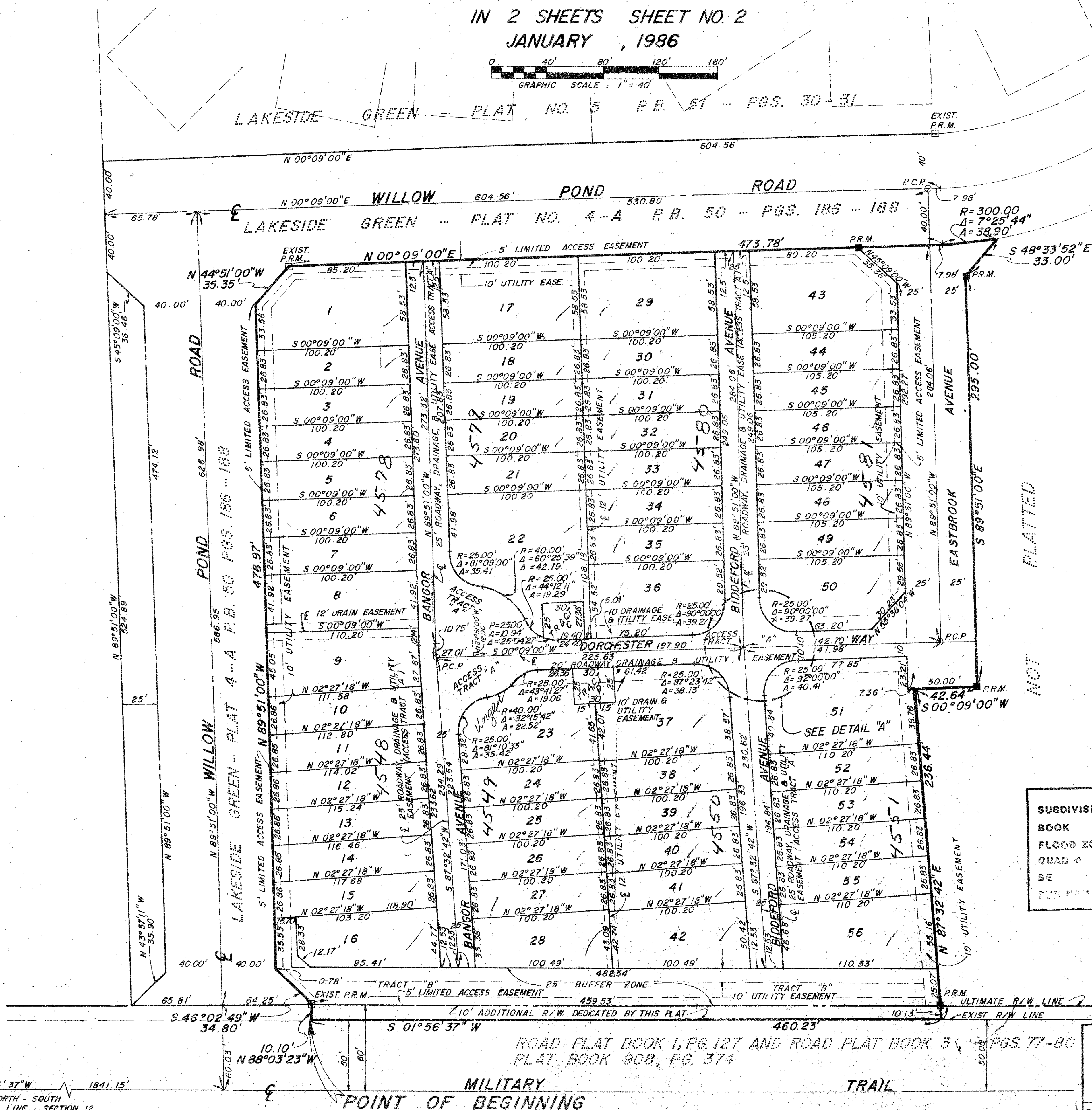


STATE OF FLORIDA
COUNTY OF PALM BEACH
This Plat was filed for record at _____ M.
this _____ day of _____ 19____
and duly recorded in Plat Book No. _____
on page _____
JOHN B. DUNKLE, Clerk Circuit Court
By _____, D.C.

DRAWING NUMBER

DRAWING NUMBER

DRAWING NUMBER



SUBDIVISION * Lakeside Green Plat #6
BOOK 54 PAGE 39
FLOOD ZONE B FLOOD MAP #145B
QUAD # 30 ZONING
SE ZIP CODE 33409

ADD. BY [Signature]
CHECKED BY [Signature]

0265-002 54/39

THIS INSTRUMENT WAS PREPARED BY JOSEPH M. TUCKER IN THE OFFICES OF
ROSSI AND MALAVASI ENGINEERS, INC., 1675 PALM BEACH LAKES BLVD.
WEST PALM BEACH, FLORIDA 33401
PHONE: 737-6546

ROSSI AND MALAVASI ENGINEERS, INC. WEST PALM BEACH, FLORIDA
A PORTION OF A P.U.D.
LAKESIDE GREEN-PLAT NO. 6
IN 2 SHEETS SHEET NO. 2
Date JANUARY, 1986
Designed [Signature]
Drawn D. FREDERICK
Approved [Signature]
Job No. [Blank]
File No. [Blank]
Sheet 2 of 2